

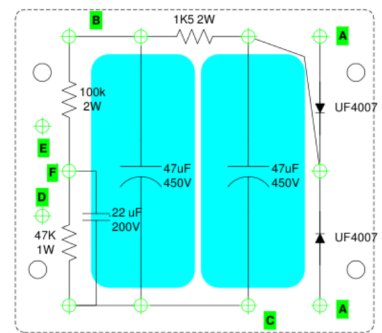
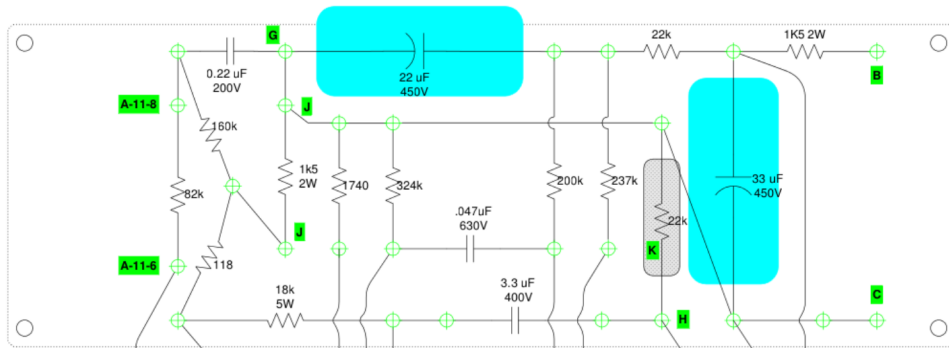
V1 7025/12AX7/ECC83

V2 5963/8514A/12AU7/ECC82

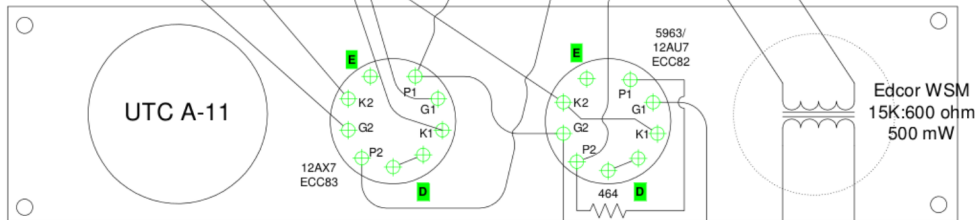
- A To V1, V2 filaments pins 4 & 5
- B To V1, V2 filaments pin 9

This circuit adapted from the original Pultec design.
Scans of the original schematic and operating manual may be found at:
<http://www.geocities.com/rafafredy/DIY/pulteq-mb1/Pulteq-MB1.htm>

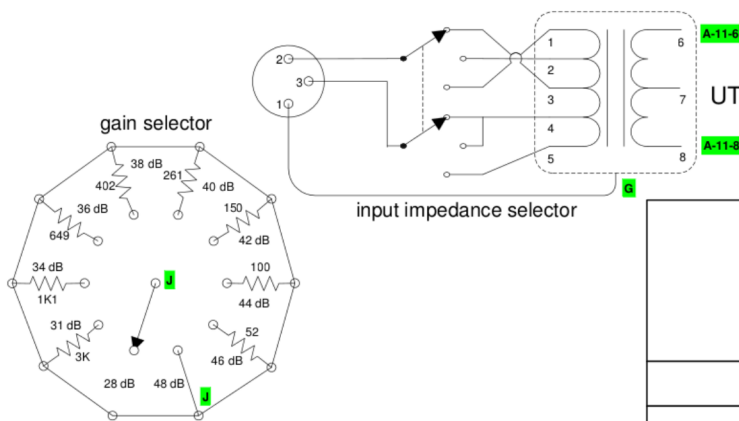
Dual microphone preamplifier schematic			
Based on Pultec MB-1 circuit			
As designed and built by Jon Fleig, April 2005			
http://www.frontiernet.net/~jff/pultec_mb1/DualTubeMicrophonePreamp.html			
SIZE	FSCM NO	DWG NO	REV
		DPMB1-L	B
(c) 2005 Jon Fleig	SCALE 1 : 1	SHEET	1 OF 3



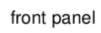
power supply rectifier/filter board
shared by both channels



- A** Triad R-4A HV Secondary 555 VCT
- B** B+ 325 VDC
- C** Chassis ground, PT HV Center tap
- D** PT Filament 6.3 VCT, 12A_7 pins 4 & 5
- E** PT Filament 6.3 VCT, 12A_7 pin 9
- F** PT Filament center tap, ref 115 VDC
- G** Input ground
- H** Unbalanced output
- I** Gain selector switch
- K** Omit 22k resistor when using output TX



Dual microphone preamplifier layout Based on Pultec MB-1 circuit				
As designed and built by Jon Fleig, April 2005 http://www.frontiernet.net/~jff/pultec_mb1/DualTubeMicrophonePreamp.html				
(c) 2005 Jon Fleig	SIZE	FSCM NO	DWG NO	REV
	SCALE	1 : 1	DPMB1-L	B
			SHEET	2 OF 3



As designed and built by Jon Fleig, April 2005
http://www.frontiernet.net/~jff/pultec_mb1/DualTubeMicrophonePreamp.html